



**REDUCE, REUSE, RECYCLE, & ROT
= RECOLOGIZE!**



Recology Sonoma Marin

- Started operations December 23, 2017
- Employee owned company - 460 local employees
- Part of Teamsters Union 665



Recology.com/Careers

- Drivers
- Sorters
- Mechanics
- Operations
- Waste Zero
- Customer Service
- Human Resources
- Accounting



Service Area

- Recycle, compost, garbage, C&D, street sweeping, and recycle processing services
- 155,000 customers
 - 145,500 residential
 - 9,500 commercial



Mission

- Reduce tons sent to landfill
- Recover resources

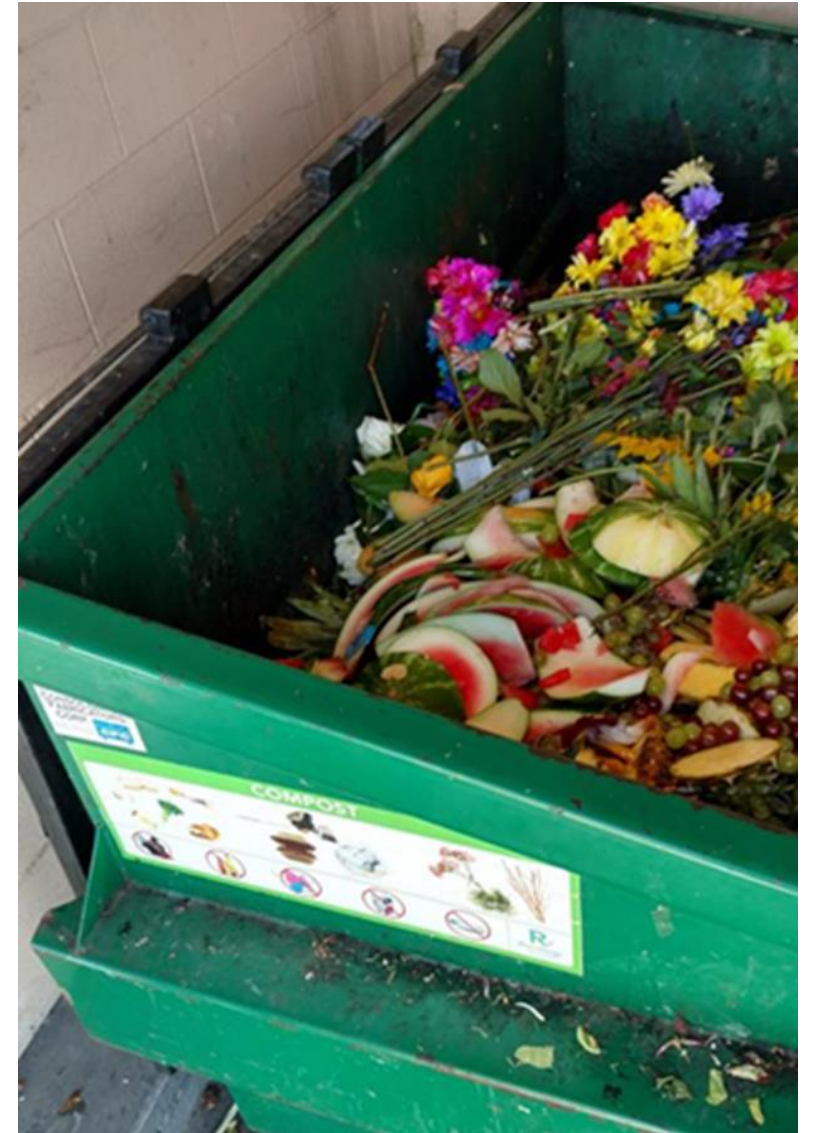


Get Pumped!



CA Compost & Recycle Laws

- Mandatory Recycle (AB 341)
 - All commercial accounts with 4+ cubic yards solid waste per week
- Mandatory Compost (SB 1383)
 - Requires all residents and businesses to compost
 - 75% reduction in landfilled organics by 2025 (from 2014 level)
 - 20 % increase in edible food recovery by 2025



SB 1383: California's Short-Lived Climate Pollutant Reduction Strategy

- Methane: A climate super pollutant 84 times more potent than carbon dioxide.

POLICY BASED ON SCIENCE

Our Scientists Say Pollution Is Changing Our Climate



Compost

COMPOST | ABONO



Contamination



R
Recology
Sonoma Marin
WASTE ZERO

These materials DO NOT belong in the Compost bin.

 Plastic	 Styrofoam	 Glass
 Gloves	 Aluminum trays	 Plastic utensils
 Aseptic containers	 Black bags	 Shrink wrap



Compost sequesters carbon from the atmosphere.

Compost Process

The Grinder



Windrows, 60 - 90
Day Process



Turning/ Watering
Windrows



Screening



Final Compost Product



Recycling

RECYCLE | RECICLE

The graphic is divided into two horizontal sections. The top section, titled "RECYCLE | RECICLE", shows various items that are accepted for recycling: a brown paper bag, a cardboard box, a milk carton, a glass bottle, a jar of pickles, a can of chili sauce, a foil pan, a soda can, a water bottle, a blue jug, a mustard bottle, a blue bucket, and a red cup. The bottom section shows items that are not accepted for recycling, each with a red prohibition sign over it: a light bulb, a black trash bag, a candy bar wrapper, a wine glass, and a blue glove. The Recology logo is in the bottom right corner.

Recology
WASTE ZERO

Save Natural Resources

Recycling 1 ton of paper saves:

- 17 **trees**
- 2 barrels of **oil**
- 7,000 gallons of **water**
- 4,100 kWh of **electricity** (enough to power the average American home for 5 months)
- 3 cubic yards of **landfill space**





Recyclables are sorted, baled, and made into new items.

Sorting Recyclables



**DON'T JUST RECYCLE,
RECYCLE RIGHT!**



Plastics? Containers Only



No Hazardous Waste



Empty & Dry



No Plastic Bags



**When in doubt,
Find out!**

[Recology.com/RSMWhatBin](https://www.Recology.com/RSMWhatBin)



800.243.0291

RecologySonomaMarin@Recology.com

[Facebook.com/RecologySonomaMarin](https://www.facebook.com/RecologySonomaMarin)

Contamination

- Plastic bags, hoses, etc. get caught in the spinning discs of the sorting equipment
- Liquids & food waste contaminate paper & cardboard



Recology.com/RSMWhatBin

The screenshot displays the Recology website's 'WhatBin' search interface. At the top, there is a navigation bar with a search icon and the text 'SEARCH'. The Recology logo, featuring a green 'R' with a leaf and the text 'Recology WASTE ZERO', is centered. To the right of the logo are links for 'CONTACT', 'FAQ', 'CAREERS', and 'PAY MY BILL'. Below the navigation bar, there is a secondary menu with links for 'OUR VISION', 'CUSTOMER SERVICE', 'LOCATION', 'IN MY COMMUNITY', 'HELPFUL RESOURCES' (which is highlighted), 'NEARBY LOCATIONS', 'MY RECOLOGY', and 'RECOLOGY-SAN-FRANCISCO'. A language selector shows 'English' and a 'Share' button is also present.

WhatBin

Use the search bar to type in the item you want to dispose of, and we'll tell you where it goes.

napkin SEARCH

COMPOST RECYCLING LANDFILL OTHER

PLEASE PUT PAPER NAPKINS IN THE COMPOST

So, What is Garbage?

GARBAGE | BASURA



Hazardous Waste

- Do not dispose of in Garbage, Recycle, or Compost
- Residential customers only- tape the battery terminals and place them in a sealed clear plastic bag on top of your recycling cart
- Learn more a ZeroWasteSonoma.gov



Trashed: The Global Waste Problem



Reduce & Reuse



Questions?



[Facebook.com/
RecologySonomaMarin](https://www.facebook.com/RecologySonomaMarin)

[Recology.com/SonomaMarin](https://www.Recology.com/SonomaMarin)

RSMWasteZero@Recology.com

